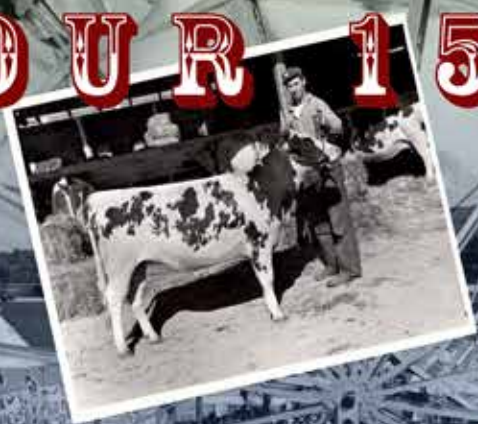


WWW.CUMBERLANDFAIR.COM

2022 CUMBERLAND FAIR

OUR 150TH FAIR



SEPT 25-OCT 1

MAINE FAMILY FAIR AT THE CUMBERLAND
FAIRGROUNDS IN CUMBERLAND, MAINE

SPONSORED BY THE CUMBERLAND FARMER'S CLUB

CUMBERLAND FARMERS CLUB

SINCE 1869

AMBASSADORS FOR AGRICULTURE... PAST, PRESENT and FUTURE

• CUMBERLAND, MAINE •



EXCITING FAMILY ENTERTAINMENT AT THE 2022 - 150TH CUMBERLAND FAIR

All-American Rodeo! Professional Rodeo Company | Harness Racing Daily
Museum, Exhibition Hall and Blacksmith Demonstrations Daily
Gillette Shows - Daily on the Midway - "Bracelet Days" - Monday & Wednesday & Thursday -
Ride All Rides - One Price \$25.00 (Fair admission separate)

SUNDAY

Opening Day Events - Grand Parade "Preserve, Protect, Promote and Honor" | Christie Ray Trio
Northern Groove Band | Kids Steer Pull | Colby College Woodsman's Show | Plush
Demolition Derby Sweepstakes Horse Pull: Dynamometer Machine Pulling
sponsored by The Bill Dodge Difference

MONDAY

Maine Agricultural Day | Silver Circus Variety Show | Gospel Friends | Military Monday
Steer Memorial Pull | Barry Arvin Young | RaveX Outerlimits Tour – Freestyle Motocross Show
Ride Bracelet Day

TUESDAY

Senior Citizens Day | Steppin' Out Blues Band | Davidson County Line | Jerks of Grass
Present Company | Cumberland Fair Classic Car Show | Maine Antique Tractor Pull

WEDNESDAY

All American Rodeo! | Mr. Magic | 4-H Livestock Auction | Ride Bracelet Day
Black Cat Road | Sweepstakes Oxen Memorial Pull

THURSDAY

All American Rodeo! | Senior Citizens Day | Aaron Nadeau | Jack Fossett Band | Stone Broke Band
Port City Sound | Burrito Eating Contest – sponsored by Don at the Moose Shack
Show Steers & Oxen Events | 2 Horse Canadian Style Pull | Ride Bracelet Day

FRIDAY

MSTTP Tractor Pull featuring Modified Big-Rig's and Semi Pulls | Pejepscot Station
Bonnie Edwards and the Practical Cats | Mr. Drew and His Animals Too! | Roadhouse
Sweepstakes Horse Memorial Pulls | Draft Horse & Pony Show

SATURDAY

Pig Scramble | Professor Paddy-Whack Songs & Silly Stuff | Preston & Curry
Papa Tim and the Desperate Man's Blues Explosion | MSTTP Truck Pulls | The Smith Collaboration
Buck T Edwards | Fireworks Show by Central Maine Pyrotechnics

2022 SCHEDULE OF EVENTS AT THE CUMBERLAND FAIRGROUNDS

150th Annual Cumberland County Fair September 25 - October 1

OCTOBER 2 - HARNESS RACING ONLY

Saturday September 24

9:00 a.m. to 7:00 p.m. – 4-H Market Hogs, Swine, Market Lambs, Baby Beef arrive
9:00 a.m. to 11:00 a.m. – 4-H exhibits to 4-H Exhibition Hall - Closed to public
9:00 a.m. to 12:00 p.m. - baked goods and fresh produce entries accepted in Exhibition Hall.
11:00 a.m. – 4-H Hall Exhibits Judged – Closed to public
12:00 p.m. - Exhibition Hall closed for judging
12:00 p.m. - 5:00 p.m. Poultry and Waterfowl Arrival
3:00 p.m. – 4:00 p.m. Pulling Steers and Oxen Weigh-In, good for all week – must stay on grounds
4:00 p.m. – 5:00 p.m. Pulling Horses Weigh-In, good for all week – must stay on grounds
(Weigh-in 7:00 a.m. daily for remainder of Fair Week)

Sunday September 25

**Opening Day Events - Grand Parade “Preserve, Protect, Promote and Honor” | Christie Ray Trio
Northern Groove | Colby College Woodsman’s Show | Demolition Derby | Plush | Dynamometer Machine
Horse Pulling sponsored by The Bill Dodge Difference | Gordon Robinson Memorial Pull
Giant Pumpkin/Squash Weigh In & Contest**

7:00 a.m.	Weigh-in Pulling animals (weigh-in good for all week)
8:00 a.m. – 9:00 a.m.	Cumberland Fair Pumpkin Contest - Fruit Accepted at Front Gate
8:30 a.m.	State of Maine Dairy Goat Show – Show Arena
9:00 a.m. – 9:00 p.m.	Exhibition Hall, Museum, Sugar House, Horticulture, Old MacDonalds Farm - Open
9:00 a.m.	Cumberland Fair Miniature Horse Show – Riding Arena
9:00 a.m.	Rabbit show – Sanctioned by American Rabbit Breeders Association, Inc. and ARBA Sanctioned New England Rabbit and Cavy Show Circuit – Entertainment Building
9:00 a.m.	1730 lbs Steer Distance Pull – Pulling Arena
9:30 a.m.	Cumberland Fair Pumpkin Contest – weighing – Front Gate/Flagpoles area
10:00 a.m.	900-1130 lbs. Kids Steer Distance Pull 12 & Under - Pulling Arena 1131-1330 lbs. Kids Steer Distance Pull 16 & Under – Pulling Arena – sponsored by Fielding’s Oil Gordon Robinson Youth Teamster Award
10:00 a.m.	Daily Cooking Demonstrations - Exhibition Hall
10:00 a.m.	Daily Demonstrations in the Museum
10:00 a.m.	Poultry and Waterfowl judging – Poultry Barn
11:00 a.m.	Grand Parade – Theme: “Preserve, Protect, Promote and Honor” – Racetrack; Immediately following end of Parade: Opening Ceremonies –Front of Grandstands
11:00 a.m.	Mid-Way Opens (weather permitting)
11:30 a.m.	Colby College Woodsman’s Team – Blue Seal Feed Show Arena (Museum Area)
12:00 p.m.	Kids Pedal Tractor Pull – sign up and weigh-in – Antique Power Building (Museum Area)
12:30 p.m.	Kids Pedal Tractor Pull – in front of Antique Power/Hall Implement Building (Museum Area)
12:00 p.m.	Christie Ray Trio - Main Stage in front of Exhibition Hall
12:15 p.m.	Pig Races - Show Arena
2:00 p.m.	Harness Racing - Racetrack/Grandstands
2:00 p.m.	Northern Groove – Main Stage in front of Exhibition Hall
2:00 p.m.	27.5-foot Dynamometer Machine Pull – Pulling Arena Sponsored by The Bill Dodge Difference – Proud member of Maine Buick GMC Dealers (3430 lbs. & Under Horse followed by Sweepstakes Horse)
2:30 p.m.	Colby College Woodsman’s Team – Blue Seal Feed Show Arena - Museum Area
4:30 p.m.	Plush – Main Stage in front of Exhibition Hall
6:00 p.m.	Pig Races - Show Arena
6:00 p.m.	NEW – 4130 6ft Ox Pull Gordon Robinson Memorial Pull – Pulling Arena
6:30 p.m.	Demolition Derby - In front of Grandstands -Sponsored by Lakeside Garage and Cumberland Salvage.

Monday September 26

**Maine Agriculture Day | Military Monday | Special Ride Promotion - Pay \$25 Ride All Rides (Fair admission separate)
RaveX Outer Limits Tour | Barry Arvin Young | Silver Circus Variety Show | Gospel Friends | Bill Hawkes Memorial Pull**

6:00 a.m. - 9:00 a.m.	Sheep Arrive in Open Pens
7:00 a.m.	Weigh in of all Draft Horses, Oxen and Steers
9:00 a.m. - 9:00 p.m.	Exhibition Hall, Museum, Sugar House, Horticulture, Old MacDonalds Farm - Open
9:00 a.m.	4-H Dairy Goat Show – Show Arena
9:00 a.m.	Bill Hawkes Memorial Pull - 2130lbs Steer Distance Pull - Pulling Arena
	2930lbs Ox Distance Pull – Pulling Arena
10:00 a.m.	Daily Cooking Demonstrations - Exhibition Hall
10:00 a.m.	Daily Exhibitions – Museum Area
10:00 a.m. – 1:00 p.m.	Maine Agriculture Day Events – K-6th Grade – see Exhibition Hall section for details
10:00 a.m.	Show Steer & Oxen Cart Class – Blue Seal Feeds Show Arena – Museum Area - Sponsored by Merrifield Builders
12:00 p.m.	Gillette Mid-Way Opens (weather permitting)
1:00 p.m.	4-H Market Hogs weighed
1:00 p.m.	3230 lbs Horse 15ft – Pulling Arena
1:00 p.m.	Harness Racing – Racetrack/Grandstands
2:00 p.m.	Gospel Friends - Main Stage in front of Exhibition Hall
3:00 p.m.	4-H Sheep Obstacle Course - Show Arena
4:00 p.m.	3130 lbs Horse 2lb Rock % Distance – Pulling Arena
4:00 p.m.	Barry Arvin Young – Main Stage in front of Exhibition Hall
4:00 p.m.	4-H Market Hog Show followed by 4-H Swine Show - Show Arena
5:30 p.m.	4-H Market Lambs Weighed
6:00 p.m.	4-H Rabbit Show – Rabbit Barn
6:00 p.m.	Silver Circus Variety Show - Main Stage in front of Exhibition Hall
6:30 p.m.	Pig Races - Show Arena
6:30 p.m.	2530 lbs. Steer Distance Pull – Pulling Arena
	2130lbs Steer 6 ft Pull – Pulling Arena
7:00 p.m.	RaveX Outer Limits Tour – Freestyle Motocross Show – In front of Grandstands

Tuesday September 27

**Senior Citizens Day | Steppin' Out Blues Band | Cumberland Fair Annual Classic Car Show | Antique Tractor Pull
Photography Walk with Mike Leonard | Jerks of Grass | Russell Hall Sweepstakes Oxen Memorial Pull**

7:00 a.m.	Weigh in of all Draft Horses, Oxen and Steers
9:00 a.m. - 9:00 p.m.	Exhibition Hall, Museum, Sugar House, Horticulture, Old MacDonalds Farm - Open
9:00 a.m.	2530 Steer 6ft Pull – Pulling Arena
	2930 Oxen 6 ft Pull – Pulling Arena
	3330 Oxen Distance Pull – Pulling Arena
10:00 a.m.	Daily Cooking Demonstrations - Exhibition Hall
10:00 a.m.	Daily Demonstrations – Museum Area
10:00 a.m.	4-H Market Lamb Show - Show Arena
11:00 a.m.	Mid-Way Opens (weather permitting)
12:00 p.m.	4-H Baby Beef Show - Show Arena
12:00 p.m.	Present Company – Main Stage in front of Exhibition Hall
1:00 p.m.	Harness Racing – Racetrack/Grandstands
2:00 p.m.	4-H Sheep Show - Show Arena
2:00 p.m.	Steppin' Out Blues Band – Main Stage in front of Exhibition Hall
2:30 p.m.	3330 lbs. Horse Distance Pull – Pulling Arena
4:00 p.m.	Open Swine Show, Show Arena
4:00 p.m.	Davidson County Line – Main Stage in front of Exhibition Hall
4:00 p.m.	Logging Agility – Show Steers & Oxen team event – Blue Seal Feeds Show Arena – Museum Area – Sponsored by Hair House
6:00 p.m.	Cumberland Fair Annual Classic Car Show – Racetrack (Participants may enter Racetrack at conclusion of Harness Racing, approximately 4:30pm)
6:00 p.m.	Russell Hall Memorial Pull - Sweepstakes Oxen 6 ft Pull – Pulling Arena
	3330 lbs Oxen 6ft Pull – Pulling Arena
6:30 p.m.	Jerks of Grass – Main Stage in front of Exhibition Hall
6:30 p.m.	Pig Races - Show Arena
6:30 p.m.	Photography Walk with Mike Leonard – meet at Exhibition Hall
6:30 p.m.	Maine Antique Tractor Pull – in front of Grandstands
7:00 p.m.	4-H All Breed Sheep Lead Line Show - Show Arena

Wednesday September 28

All American Rodeo! | 4-H Livestock Auction | Mr. Magic! | Black Cat Road | Special Ride Promotion - \$25 ride all rides (Fair admission separate) | Robert Morrill Sweepstakes Oxen Memorial Pull | Farmer's Draft Horse and Pony Demonstrations

7:00 a.m.	Weigh in of all Draft Horses, Oxen and Steers
9:00 a.m.	Women's Steer & Ox Distance Pull (min 2000 lb.) – Pulling Arena
9:00 a.m.	Open Sheep Show - Show Arena
9:00 a.m. - 9:00 p.m.	Exhibition Hall, Museum, Sugar House, Horticulture, Old MacDonalds Farm - Open
10:00 a.m.	Daily Demonstrations - Exhibition Hall
10:00 a.m.	Single Steer & Ox – Blue Seal Feeds Show Arena – Sponsored by Merrifield Builders
11:00 a.m.	Robert Morrill Memorial Pull – Sweepstakes Oxen Distance Pull – Pulling Arena
12:00 p.m.	Gillette Mid-Way Open (weather permitting)
1:00 p.m.	Harness Racing – Racetrack/Grandstands
2:00 p.m.	Mr. Magic! – Main Stage in front of Exhibition Hall
2:00 p.m.	3130 Horse 15 Foot Pull – Show Arena
3:30 p.m.	Mr. Magic! – Main Stage in front of Exhibition Hall
4:30 p.m.	4-H Auction: Baby Beef, Market Lambs, Market Hogs - Show Arena
5:30 p.m.	Black Cat Road - Main Stage in front of Exhibition Hall
6:00 p.m.	Dairy Goat Demonstration - Goat Barn
6:00 p.m.	3330 lbs. Horse 15 ft. Pull - Pulling Arena
6:30 p.m. – 9:00 p.m.	Entries Accepted – State of Maine Old Fashioned 2 Crust Apple Pie Contest – Exhibition Hall
6:30 p.m.	Pig Races - Show Arena
7:00 p.m.	All American Rodeo – Infield area – NO ADMITTANCE until after Harness Racing has concluded. Entry only through gate near Exhibition Hall/end of Midway area

Thursday September 29

**All American Rodeo! | Senior Citizens Day | Aaron Nadeau | Port City Sound | Jack Fossett Band
Stone Broke Band | Burrito Eating Contest – sponsored by the Moose Shack | Show Steers & Oxen Events
Loring & Ruth Norton Memorial Pull -3 Horse Canadian Style Pull | State of Maine Apple Pie Contest
Special Ride Promotion - \$25 Ride all Rides (Fair admission separate)**

6:30 a.m.	Entries accepted for Show Steers and Oxen Show – Blue Seal Feeds Show Arena
7:00 a.m.	Weigh in of all Draft Horses, Oxen and Steers
8:00 a.m.	4-H Beef Heifers and other beef steer arrive
8:30 a.m.	Entries Accepted – State of Maine Old Fashioned 2 Crust Apple Pie Contest – Exhibition Hall (No vehicles on fairgrounds; use Blanchard Rd Parking lot)
9:00 a.m. - 9:00 p.m.	Exhibition Hall, Museum, Sugar House, Horticulture Building, Old MacDonalds Farm - Open
9:00 a.m.	Show Steers and Oxen Show – Blue Seal Feeds Show Arena – Museum Area
9:30 a.m.	4-H Beef Clipping Contest – Show Arena
10:00 a.m.	Daily Cooking Demonstrations - Exhibition Hall
10:00 a.m.	3230 lbs Horse Distance Pull – Pulling Arena
10:30 a.m.	Deadline for Accepting Apple Pie Entries *no entries accepted after 10:30 a.m.*
11:00 a.m.	State of Maine Old Fashioned 2-Crust Apple Pie Contest Judging - Exhibition Hall
12:00 p.m.	Gillette Mid-Way open (weather permitting)
12:00 p.m.	Aaron Nadeau – Main Stage in front of Exhibition Hall
12:30 p.m.	3430 lbs Horse Distance Pull – Pulling Arena
12:30 p.m.	4-H Beef Heifer Show and other Beef Steer Show
1:00 p.m.	Show Steer and Oxen Log Youth Scooting Contest – Blue Seal Feeds Show Arena – Sponsored by Enhanced Beauty by Molly Show Steer and Oxen 2500 and Under Log Scooting Show Steer and Oxen 2500 and Over Log Scooting – 1st Prize Sponsored by One Stop Earthworks
1:00 p.m.	Harness Racing - Racetrack/Grandstands
1:00 p.m.	Loring and Ruth Norton Memorial Pull - 3430lbs Horse Distance Pull - Pulling Arena
2:00 p.m.	Stone Broke Band – Main Stage in front of Exhibition Hall
2:30 p.m.	Farmers Steer & Ox Distance % Pull (Light & Heavy Class – min team weight 1400) – Pulling Arena
3:00 p.m. – 7:00 p.m.	Port City Sound –Roaming throughout Fairgrounds
4:00 p.m.	Jack Fossett Band – Main Stage in front of Exhibition Hall
6:00 p.m.	Burrito Eating Contest – sponsored by Moose Shack – Main Stage in front of Exhibition Hall – submit entries at the Main Office prior to 1pm; drawing on stage between 5:30 and 6pm for 5 participants – Cash prizes! \$100 to first prize - \$50 to second prize
6:00 p.m.	NEW Two Horse Percentage Pull Canadian Style 6 ft – no touch with reins, 1 length of ring, 15 min, Best load percentage crossed
6:30 p.m.	Pig Races - Show Arena
7:00 p.m.	All American Rodeo – Infield area – NO ADMITTANCE until after Harness Racing has concluded. Entry only through gate near Exhibition Hall/end of Midway area
7:00 p.m.	Closing of Pig Scramble entries – Secretary, Main Office *No late entries accepted*

Friday September 30

**Cumberland Fair Maine Maple Day | Pejepscot Station | Gordon Robinson Memorial Horse Pull
Kilton Lamb Memorial Sweepstakes Horse Pull | Stanley and Mary Hall Memorial Sweepstakes Horse Pulls
Bonnie Edwards and the Practical Cats | MSTTP Tractor Pull**

7:00 a.m.	Weigh in of all Draft Horses, Oxen and Steers
8:00 a.m. – 9:00 a.m.	Entries accepted for Draft Horse and Pony Show – Outside Riding Arena
9:00 a.m. – 9:00 p.m.	Exhibition Hall, Horticulture, Sugar House, Museum, Old MacDonalds - Open
9:00 a.m. – 11:00 a.m.	Silver Dollar Pancakes with Maine Maple Syrup - Sugar House
10:00 a.m.	Daily Cooking Demonstrations - Exhibition Hall
10:00 a.m.	Daily Demonstrations – Museum Area
10:00 a.m.	Draft Horse and Pony Show – Outside Riding Arena
	Pony Pair Wagon class Sponsored by Richard Wing & Son Logging Inc.
	Horse Pair Wagon class Sponsored by Blue Seal and Kent Feeds
10:00 – Noon	Maine Maple Syrup Tasting – Sugar House
10:30 a.m.	Kilton Lamb Memorial Pull – Sweepstakes Horse Distance – Pulling Arena
11:00 a.m.	Gillette Mid-Way Open (weather permitting)
12:00 p.m.	Pejepscot Station – Main Stage in front of Exhibition Hall
1:00 p.m.	Harness Racing – Racetrack/Grandstands
2:00 p.m.	Gordon Robinson Memorial Horse Pull - 3430 - 12 ft Pull - Pulling Arena
2:00 p.m.	Maine Maple Candy Demonstration - Sugar House
2:00 p.m.	Bonnie Edwards and the Practical Cats – Main Stage in front of Exhibition Hall
3:00-5:00 p.m.	4-H Working Steers arrive
3:00-6:00 p.m.	4-H Dairy arrive
3:00 p.m.	Maine Maple Coated Nuts Demonstration - Sugar House
3:30 p.m.	Mr. Drew and His Animals Too!! Educational Exotic Animal Show – Show Arena
3:00 p.m. – 5:00 p.m.	4-H Working Steers arrive – Pulling Area
3:00 p.m. – 6:00 p.m.	4-H Dairy Arrive – Livestock area
4:00 p.m.	Maine Maple Sugar on Snow Demonstration - Sugar House
5:00 p.m. - 8:00 p.m.	Sample Maine Maple Treats - Sugar House
5:00 p.m.	Roadhouse – Main Stage in front of Exhibition Hall
6:00 p.m.	Stanley & Mary Hall Memorial Pull – Sweepstakes Horse 12 ft - Pulling Arena
6:30 p.m.	Pig Races - Show Arena
6:30 p.m.	MSTTP Tractor Pulls – in Front of Grandstands
7:00 p.m.	4-H Dairy Clipping Contest - Show Arena

Saturday October 1

**Pig Scramble | Preston & Curry | Professor Paddy-Whack Songs & Silly Stuff | Smith Collaboration
Papa Tim and the Desperate Man's Blues Explosion | Buck T Edwards | MSTTP Truck Pulls
Open Horse Show | Fireworks Show by Central Maine Pyrotechnics**

7:00 a.m.	Open Horse Show participants arrive (must be on grounds by 9:00 am)
7:30 am - 8:30 am	Farmer's Draft Horse Entries Accepted - Blue Seal Show Arena office 9:00 a.m.
	Exhibition, Horticulture, Sugar House and Museum Open
9:00 a.m.	4-H Poultry Show – Livestock Show Ring
9:00 a.m.	Pig Scramble (entry completed in Main office by 7 p.m. Thursday)
9:00 a.m.	Farmer's Draft Horse and Pony - Halter Classes – Blue Seal Feeds Show Arena
9:30 a.m.	Open Horse Show – Outdoor Riding Arena
9:30 a.m.	Calf Scramble – Pulling Arena (Drawing prior to event)
10:00 a.m.	Professor Paddy-Whack – Songs & Silly Stuff – Main Stage in front of the Exhibition Hall
10:00 a.m.	Gillette Mid-Way Open
10:00 a.m.	Daily Cooking Demonstrations - Exhibition Hall
11:00 a.m.	Make-A-Wish luncheon and auction fundraiser - under the Grandstands.
	All proceeds benefit Make-A-Wish Foundation of Maine.
11:00 a.m.	Professor Paddy-Whack – Songs & Silly Stuff – Main Stage in front of the Exhibition Hall
11:30 a.m.	Farmer's Draft Horse and Pony Demonstrations – will begin after end of Halter Classes
	Youth (18 & Under) Draft Horse and Pony and Mini Horse Single Log Twitch Demonstration
	Youth (18 & Under) Draft Horse and Pony and Mini Horse Team Log Twitch Demonstration
12:00 p.m.	Money Scramble - 12-year-old and under – no parents allowed in the ring - Show Arena
12:00 p.m.	Preston & Curry – Main Stage in front of Exhibition Hall
12:30 p.m.	4-H Working Steers Show and Pulling - Pulling Arena
12:30 p.m.	Pig Races - Show Arena
1:00 p.m.	4-H Dairy Show - Show Arena
1:00 p.m.	Harness Racing – Racetrack/Grandstands
2:00 p.m.	The Smith Collaboration– Main Stage in front of Exhibition Hall

2:00 p.m.	Farmer's Draft Horse and Pony Events Farmer's Single Draft Horse Log Twitch – Blue Seal Feeds Show Arena Bruce Alexander Memorial - Farmer's Team Draft Horse Team Log Scoot – Blue Seal Feeds Show Arena sponsored by Grace Day – Landing Real Estate Farmer's Draft Horse and Pony Mystery Event – Blue Seal Feeds Show Arena
4:00 p.m.	Papa Tim and the Desperate Man's Blues Explosion – Main Stage in front of Exhibition Hall
5:00 p.m.	Maine Horse Association – "Greatest Show on Earth!" – Pulling Arena
5:00 p.m.	Large livestock Sheep, Dairy, Beef, Swine - begin departure – Livestock Area will be closed to public
6:00 p.m.	Buck T Edwards – Main Stage in front of Exhibition Hall
6:30 p.m.	MSTTP Truck Pull – Front of Grandstand
8:30 p.m. (approx.)	Central Maine Pyrotechnics – FIREWORKS! - in front of Grandstands

Sunday, October 3

Free Admission | Harness Racing Only - Post Time 1:00 PM

9:00am – 11:00am- 4-H exhibits removed from 4-H Exhibition Hall

9:00 am – noon – items removed from Exhibition Hall

10am – 12 noon – Giant Pumpkin & Squash removal

Fair assistance will only be available during this time

ADMISSION POLICY

Adults \$12 - Children 12 and under Free. Tuesday and Thursday ONLY - Senior Citizens (65+) \$5

WEEKLY ADMISSION PASS - \$60. PARKING - FREE. No pets allowed except service animals

Please note that livestock will begin departure by Saturday evening from the fairgrounds. The Cumberland Farmers Club hopes that you understand that the animals and their keepers do everything possible to minimize any upset they may encounter during their stay on the grounds

All Government Schools (K thru 6) and buses are to use specified parking and Gate 8 access only.

School Children Chaperones: School Children Chaperones: School children chaperones accompanying school children on a school bus will be admitted free at Gate 8 ONLY. Students over 12 years of age will be charged regular daily admission. See Special Group Rate section below for advance planning. Chaperones accompanying in private vehicles will be directed to standard gates and charged regular daily admission.

Home Schools: Kindergarten thru 6th grade children will be admitted free on Maine Agricultural day at Gate 8, regular admission will apply at other times and dates. Chaperones will be charged regular daily admission.

Day Care Chaperones: Day care children will be admitted free on Maine Agricultural day at Gate 8, regular admission will apply at other times and dates. Chaperones will be charged regular daily admission.

Disabled Individuals: Non ambulatory (wheel chaired) individuals will be admitted free, due to lack of access to all areas of the Fairgrounds. Chaperones and Companions will be charged regular daily admission. No other disability discounts will apply.

Military: Military Monday ONLY - Military with proper ID - \$5.00 admission - Requires Department of Defense ID for Active Duty, Current Reservists, Retired Personnel, VA Health Benefits Card, State Driver's License showing Veteran Designation or DD214 (no dependent IDs considered)

Special Group Rates: Large group rates must be pre-approved and requests for special rates must be made at least one week prior to the Fair Opening. Requests may be presented to the Secretary for consideration: cfcsecretary@maine.rr.com.

If for any unavoidable reason, the society cannot meet its obligations, the exhibitor must accept a discount on their premiums pro-rata with any such losses. In making your entry, you accept this as part of your terms of exhibit or display.

By entering the 2022 Cumberland County Fair, Participants acknowledge that the Fair brings some risk and do hereby assume responsibility for their own well-being as well as that of any person whom they are guardian of/responsible for. Further, entry is implied consent that you agree to comply with all State, Federal, Local or Organization mandated guidelines for COVID-19 Safety and/or other mandates which may be in place at the time of the event, including wearing of face coverings and social distancing. Participants understand, agree, and hereby consent that failure or disregard to follow all protocols in effect is sufficient grounds to be excluded from participation in the Fair by Cumberland Farmers Club (CFC) or any Fair personnel or authority, and by entering provide implied consent in advance to leave and exit the event, without protest or refund, upon request by CFC or any Fair personnel or authority. Entrance provides implied consent to accept all potential risks, including the potential of exposure to coronavirus strains, and agree to hold harmless and release Cumberland Farmer's Club (CFC) or any other sponsoring organization(s) and all their subsidiaries, affiliates, officers, directors, licensees, representatives, and successors ("Released Parties") from any and all losses, causes of action, liabilities, expenses and claims for damages.

Camping Fees

All trailers must have holding tanks • Dumping station available on grounds. • All sites have power/water.

Fair Week Camping Rates:

Commercial Vendors \$80.00 Week

Daily Rate \$35.00

Negotiable weekly rates available for longer term summer (non-fair) camping.

Contact Bill Fischer, Superintendent of Camping at 207-749-0280 for further details.

Employee, Livestock, and 4-H Exhibitor Rates: \$55.00 per week

Non-Exhibitors: \$220.00 per week, includes 2 weekly passes

Summer Rates: \$40 per day for campers \$20 per day for tents

CUMBERLAND FARMER'S CLUB MEMBERSHIP

Allen, Andrew
Allen, Lisa
Allen Jr, Philip
Ambrose, Judy
Ames II, John
Barasel, Paul
Bartlett, Tim
Bickford, Jonathan
Bickford, Jonathan II
Brannigan, Anthony
Briggs, Valery
Brogan, Paul
Brown, Andrew
Burnell, Kerry
Burnell, Kerry A
Burr, Daniel
Burr, Jonathan
Carr, William
Chandler, Aaron
Cochran, Larry
Cooper, Gaylene
Cooper, Leon Jr
Cooper, Mark
Cooper, Paula
Copp, Jason
Copp, Stephanie
Corey, Robert
Davis, Jeffrey
Dobransky, Glenn (Lou)
Dolby, Tim
Doyle, Donald
Dubay, Joe
Dugas, Andy
Dugas, Deb
Dyke, Robert
Emery, Heath
Estabrook, MaryJoan
Fenderson, Donna
Fenderson, John
Fenderson, John W Jr.
Fischer, Patricia

Fischer, William
Fossett, Dan
Fossett, Danielle
Gaffer, Art
Gagnon, Philip
Gagnon, Philip Jr
Gallagher, Paul
Gardner, Jake
Googins, Corey
Googins, James
Googins, Josh
Googins, Kevin
Googins, Russell
Googins, Steven
Googins, Theodore
Grant, Jeff
Grant, Jennifer
Grant, Randy
Grover, Lee
Gumaer, Eric
Hall, Derek
Hall, Donald
Hall, George
Haskell, Clayton
Haskell, Michael
Hawkes, James
Hayward, Adam
Hayward, Andrew
Hayward, John
Hessert, Steven
Hilton, Frank III
Hodgdon, Kermit
Kimball, Chris
Kimball, Jamie Lamb
Kinney, Fred
Lamb, Tim
Landry, David
Larrabee, Patricia
Libby, Richard
Lillard, Joe
Maloney, Mary

Maloney, Robert
Maloney, Tim
Matthews, Deb
Matthews, Tommy
McCarthy, Joe
Meehan, Glenn
Merrifield, Jo-Ann
Merrifield, Lexi
Merrifield, Levi
Merrifield, Lyle **
Merrifield, Molly
Merrill, Linc
Michaud, Lori
Mitchell, Robert
Moon, Blaine
Moon, Brittany
Morrill, Richard
Moulton, Zachary
Nielsen, Sonja
O'Brien, Daniel
O'Brien, Alan
O'Brien, Diane
Palmer, Heidi
Palmer, Jim
Partridge, Jeff
Phipps, William
Pierce, Robert
Pollock, Allison
Pollard, Andrea
Prevost, Gerry
Prevost, Richard
Richards, Donald
Rogers, Raymond
Ryan, Thomas
Sawyer, David
Sawyer, Katie
Sawyer, T
Sawyer, Tammy
Sherwood, Cynthia
Shores, Douglas Jr.
Skelton, Michaela

Small, Alan
Small, Carolyn
Small, Charlie
Small, David
Small, Francis *
Small, George
Small, Jordan
Steinman, Jeff
Stiles, William
Storey, Robert
Stults, William
Switzer, Kevin
Tarantino, Elizabeth
Taylor, Ann Marie
Taylor, Bryan
Thompson, Carl
Timmons, Michael *
Timmons, Margaret (Peggy)
Tyler, Thomas
Watson, Wally
Webster, Robert
Webster, Stacey
Webster, William
Weed, Clayton
Weeman, Craig
Weeman, Julie
Wells, Charles
Wells, Linda
Whitcomb, Charles
Wilson, Gary
Winship, Edwin
Winship, Gary
Winship, Oliver
Winship, Ron Jr.
Winslow, Mark
Winslow, Stefan
Wormell, Leroy
Wormell, Peter
*Past Presidents
**Current President

OFFICERS

President - Lyle Merrifield
195 N. Gorham Rd Gorham, ME 04038 (207) 415-3001

Vice President – Theodore Googins
64 Shaker Rd. Gray, ME 04039 (207) 657-4981

Treasurer – Jeff Steinman
PO Box 745 Cumberland ME 04021 (207) 829-4107

Secretary - Elizabeth Tarantino
29 Daffodil Ln. Cumberland Maine 04021
(207) 504-7032 cfcsecretary@maine.rr.com

DIRECTORS

Mark Cooper
81 Chute Rd. Windham, ME 04062 (207) 892-7276

Andy Dugas
77 Woodland Drive Yarmouth ME 04096 (207) 671-3231

Dan Fossett
6 Union Rd. Cumberland, ME 04021 (207) 829-6465

T Sawyer
12 Justine's Way Windham ME 04062 (207) 712-6199

Tammy Sawyer
196 Falmouth Rd. Falmouth ME 04105 (207) 272-6961

Bill Webster
413 Roosevelt Tr. Windham, ME 04062 (207) 831-0608

SUPERINTENDENTS

Camping (Fair Week and Seasonal)
William Fischer
139 Orchard Rd. Cumberland, ME 04021 (207) 749-0280

Commercial Vendors/Exhibits
Sonja Nielsen
201 Roosevelt Trail, Windham ME 04062 (207) 650-2729

Entertainment
Elizabeth Tarantino
29 Daffodil Ln, Cumberland ME 04021 (207) 504-7032

Exhibition Hall
Carolyn Small
273 Tuttle Rd. Cumberland ME 04021 (207)-415-4589

Fair Electrician
Theodore Googins
64 Shaker Rd., Gray, ME 04039 (207) 318-2078

Gates and Security/Parking
T Sawyer
12 Justine's Way Windham ME 04062 (207) 712-6199

Greenhouse/Horticulture Building
Jim Googins
245 Greely Road No. Yarmouth, ME 04097 (207) 632-8583

Grounds Maintenance
Dan Fossett
6 Union Rd. Cumberland, ME 04021 (207) 829-6465

Harness Racing
Michael Timmons
140 Bruce Hill Rd, Cumberland ME 04021 (207) 653-9783

Livestock
Mark Cooper
81 Chute Rd. Windham, ME 04062 (207) 892-7276

Midway Supervisor
Jon Bickford
PO Box 1644 Gray, ME 04039 (207) 310-4282

Motorized Events
Andy Dugas
77 Woodland Drive, Yarmouth ME 04096 (207) 671-3231

Museum
Molly Merrifield
PO Box 851, Gray, ME 04038 (207) 415-5678

Parade
Deb Dugas
312 Main St, Cumberland ME 04021 (207) 233-9577

Pedal Tractor Pull
Danielle Fossett
15 Acorn St. Gorham ME 04038 (207) 699-6795

Pulling Horses & Oxen
Tammy Sawyer
196 Falmouth Rd. Falmouth, ME 04105 (207) 272-6961

Show Steer & Ox, Draft Horse & Pony – Shows and Events
Lexi Merrifield
559 Knowlton Corner Rd, Farmington, ME 04938 (207) 415-3003

Website/Fair Publications
Elizabeth Tarantino
29 Daffodil Ln, Cumberland ME 04021 (207) 504-7032

Winter Storage
Jon Bickford
PO Box 1644 Gray, ME 04039 (207) 310-4282

Treasurer/Secretary Fair Office (207) 829-5531 (Fair week only)
Contact email: cfcsecretary@maine.rr.com
Race Secretary Office (207) 829-3421
Fair Office FAX (207) 829-3205

2021 4-H AUCTION BUYERS

Our 4-H Youth thank the buyers for their support!

Alexander & Schmidt
All-Med Staffing
Rick Akerson
Jessica Battilana
Cumberland Food Pantry
Micah Davis
Bill Diamond
Marge Dolby
Food Stop
Fore Street Restaurant
Mark Fortin
Gray-New Gloucester 4H Food Pantry Project
Phil Harriman

Peter Martin
Joel McCann
Tom McKenny
Linc Merrill
Stanley Moreau
Patriot Insurance Company
Ray Roux
Dave and Hollye Seddon
Bill Shane
Steven Shugars
Michael Staples
Nick Tammaro
Tammaro Landscaping
Ken Thomas
Kristi Wright

Pig Scramble Information: The Cumberland Farmer's Club presents a Pig Scramble for Cumberland County Children ages 8, 9 or 10, on Saturday, October 1, at 9:00 a.m. Pig Scramble participation is by advance entry only. Entry forms must be completed and presented to the Secretary at the Main Office in person only, no later than Thursday, September 29, 7:00 p.m. Drawing for participants will be held prior to the event, participants must be present when their name is called, or an alternate participant will be selected. A total of 10 boys and 10 girls will be selected to participate. Participants will not be announced any earlier than 9:00 a.m. on October 1. Entrants should intend to raise the pig themselves. Open to Cumberland County residents only.

Burrito Eating Contest: Sponsored by Moose Shack!
Entries may be submitted between Sunday September 25 through Thursday September 29 at 1PM (NO LATE ENTRIES!) at the Main Office.

5 Contestant names will be drawn between 5:30pm and 6pm Thursday; Contest will take place at the Main Stage on Thursday, 9/29 at 6PM
Beef Burritos will be provided by the Moose Shack (no substitutions)
Prizes: 1st Place – Ribbon and \$150 Cash 2nd Place – Ribbon and \$50 Cash 3rd-5th – Ribbon
Cash prizes generously donated by Moose Shack
All decisions by judges are final.

Note: Participants must be at least 18 years of age. Participants acknowledge that this event brings some risk and do hereby assume responsibility for their own well-being, as well, entry is implied consent to accept all potential risks, and agree to hold harmless and release Cumberland Farmer's Club (CFC) or any other sponsoring organization(s) and all their subsidiaries, affiliates, officers, directors, licensees, representatives and successors ("Released Parties") from any and all losses, causes of action, liabilities, expenses and claims for damages.

Commercial Vending: Applications for vendor spaces must be submitted through the application process on our website, <http://cumberlandfair.com/registration-forms/vendor-registration-form/>. Spaces are first come first serve and not guaranteed until your application AND deposit have been received and you have confirmation from the Superintendent of Commercial Vendors. All vendors are required to submit a certificate of insurance naming The Cumberland Farmers Club as additional insured, providing a minimum of \$1,000,000.00 liability insurance valid the week of the Fair which will include a description of your operation on the certificate. Payment in full is required by September 1. No exceptions.



A NOTE FROM CFC PRESIDENT, LYLE MERRIFIELD

Welcome guests and exhibitors to our 150th Cumberland County Fair, in September of 2022!

The Officers, Directors, Superintendents and Members of the Cumberland Farmer's Club take great pride in the fact that our organization has been host to 150 Fairs. It is our hope that you will spend time with us and enjoy the variety of agriculture, entertainment, livestock, history, and tradition our Fair has to offer.

Certainly, what you see and experience at the Fair has changed over these many years, but one thing has always held true – the Cumberland Farmer's Club has always kept agriculture at the forefront of our Fair.

Our hope is that as you visit our Fair you enjoy the exhibitors, vendors and improvements to the grounds that have taken place over the past year, as well as the history and traditions seen throughout the events.

In closing, be safe and enjoy our 150th Fair!

Sincerely,
Lyle Merrifield
President, Cumberland Farmer's Club

THE CUMBERLAND FARMER'S CLUB

The Cumberland Farmer's Club Executive Committee and Membership recognizes and honors those Cumberland Fair Family members we have lost since the 2021 Fair. We extend our deepest sympathies to their families and offer our gratitude for their service and dedication over many years. The multiple contributions to the success of the Cumberland Fair will not be forgotten.

Bruce Flanigan
Past President, Lifetime Member

Greg Fowler
Past Director, Lifetime Member

Charles "Chuck" Googins
Lifetime Member