

Remembering Lyle P. Merrifield September 1, 1962 - September 8, 2024

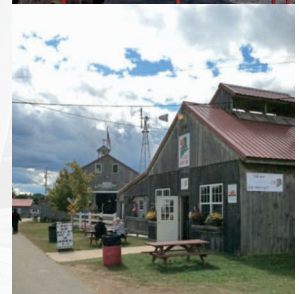
The Cumberland Farmer's Club would like to honor our past President, Lyle Merrifield, who left us far too soon, just before the 2024 Cumberland Fair.

Lyle was the facilitator of many improvements to the Cumberland Fairgrounds, including the building of the Sugar House in 2001, the 2016 building of the Pulling Arena office, in 2017 the creation of the Blue Seal Show Arena, the 2018 building of the Antique Power/Hall Implements building, the 2020 installation of the Harmon 1925 sawmill, the 2024 addition of an antique shingle mill and revitalization of our blacksmith shop and mini-horse barns, and our fairgrounds have never looked better. His contributions over the years extend well beyond the accomplishments listed here.

We share our sorrow of this enormous loss with Jo-Ann, Lyle's wife of 32 years, his daughters Lexi and Molly, and all of his family and friends.

Lyle will not be forgotten, and we will be reminded of him over and over, in big ways and small, because his life had an influence on ours. Lyle made an impact on many people's lives. He was a leader, a teacher, a mentor, a partner. He was kind, considerate, humorous, generous, a gentleman, and our friend.

His leadership inspired all of us to work harder and dream bigger about what our Fair could become. The improvements his focus and commitment made will be a small part of the amazing legacy he has left behind. He is and will continue to be missed.



EXCITING FAMILY ENTERTAINMENT AT THE 2025 - 153RD CUMBERLAND FAIR

All-American Rodeo! Professional Rodeo Company
Museum, Exhibition Hall, Blacksmith, Sugar House, Shingle Mill and Sawmill Demonstrations Daily
Live Local Entertainment Harness Racing | Motorized Events Livestock Shows, Displays and Exhibitions
Draft Horse and Ox Pulling and Demonstrations | Gillette Shows - Daily on the Midway
Ride "Bracelet Days" - Monday & Wednesday & Thursday - Ride All Rides - One Price \$30.00 (Fair admission separate)

SUNDAY

Opening Day Events - Grand Parade "Be A Farmer" | Kid's Tractor Pull | After Dark
Conjuring Carroll | Colby College Woodsman's Show | Moosehedz | Barry Arvin Young
Demolition Derby | Dynamometer Machine Pulling Sponsored by Bill Dodge Auto Group

MONDAY

Maine Agricultural Day | Military Monday | Under the Covers | Preston & Curry
Horse and Steer Memorial Pulls | Teamsters Triple Challenge Event #1 | Wild Horse Band
RaveX Outerlimits Tour – Freestyle Motocross Show
Ride Bracelet Day - Ride All Rides - One Price \$30.00 (Fair admission separate)

TUESDAY

Senior Citizens Day | Christie Ray Trio | Shugars Ukelele Band | Stone Broke | Carolyn Currie
Teamsters Triple Challenge Event #2 | Cumberland Fair Classic Car Show
Maine Antique Tractor Pull

WEDNESDAY

All American Rodeo! | Mr. Magic | 4-H Livestock Auction | Kent the Juggler | Port City Sound
Henry Honkonen | Houston Bernard Band | Teamsters Triple Challenge Event #3
Sweepstakes Oxen Memorial Pull | International Ox Pull sponsored by Far Horizon Property Maintenance
Ride Bracelet Day - Ride All Rides - One Price \$30.00 (Fair admission separate)

THURSDAY

All American Rodeo! | Senior Citizens Day | Andi Fawcett | Plush | Aaron Nadeau | Port City Sound
Poutine Eating Contest – sponsored by Pinky D's Poutine Factory | Mr. Drew and His Animals Too!
Show Steers & Oxen Events | International Horse Pull
Ride Bracelet Day - Ride All Rides - One Price \$30.00 (Fair admission separate)

FRIDAY

MSTTP Tractor Pull featuring Modified Big-Rig's and Semi Pulls | Ryan Halliburton
Joe Howard Variety Artist | Jack Fossett Band | Nettie Loops - Hula Hoop Experience
The World Famous Grassholes | Henry Lowery | Sweepstakes Horse Memorial Pulls
Draft Horse & Pony Show

SATURDAY

Pig Scramble | Silver Circus | 43 Degrees North | Quilts of Valor | Magic Wes Wonder
Chase Jobe | Timothy James & Band | Buck T Edwards | Julia Gagnon | MSTTP Truck Pulls
Fireworks Show by Central Maine Pyrotechnics | 3-Horse Pull | Steer & Ox Pulls

2025 SCHEDULE OF EVENTS AT THE CUMBERLAND FAIRGROUNDS

153rd Annual Cumberland County Fair September 21 - September 27

September 28 - HARNESS RACING ONLY

Saturday September 20

9:00 a.m. – 7:00 p.m.	4-H Market Hogs, Swine, Sheep, Market Lambs, Baby Beef arrive
9:00 a.m. – 11:00 a.m.	4-H exhibits to 4-H Exhibition Hall - Closed to public
9:00 a.m. – 12:00 p.m.	Baked goods and fresh produce entries accepted in Exhibition Hall.
11:00 a.m.	4-H Hall Closed to public
12:00 p.m.	Exhibition Hall closed to public
12:00 p.m. – 5:00 p.m.	Poultry and Waterfowl Arrival
3:00 p.m. – 4:00 p.m.	Pulling Steers and Oxen Weigh-In
4:00 p.m. – 5:00 p.m.	Pulling Horses Weigh-In

Sunday September 21

**Opening Day Events - Grand Parade "Be A Farmer" | Kid's Tractor Pull | After Dark | Conjuring Carroll | Colby College Woodsman's Show
Moosehedz | Barry Arvin Young | Demolition Derby | Dynamometer Machine Horse Pulling Sponsored by Bill Dodge Auto Group
Giant Pumpkin/Squash Weigh In & Contest**

7:00 a.m.	Weigh-in Draft Horses, Oxen & Steers
8:00 a.m.	4H Rabbit Show – *NOTE – NEW LOCATION* - Grandstands, Downstairs
8:30a.m. – 9:30 a.m.	Cumberland Fair Giant Pumpkin Contest – *NOTE - NEW LOCATION* - Fruit Accepted through Bruce Hill Rd Teamster Gate – Hall Rd in Heritage Park - Museum area
8:30 a.m.	State of Maine Dairy Goat Show – Show Arena
8:30 a.m.	1730 lbs Steer Distance Pull – Pulling Arena 900-1130 lbs. Kids Steer Distance Pull 12 & Under - Pulling Arena 1131-1330 lbs. Kids Steer Distance Pull 16 & Under – Pulling Arena Gordon Robinson Youth Overall Teamster Award
9:00 a.m. – 9:00 p.m.	Exhibition Hall, Museum, Sugar House, Horticulture, Old MacDonalds Farm, Livestock Barns – Open
9:00 a.m.	Cumberland Fair Miniature Horse Show – Riding Arena
9:00 a.m.	Rabbit show – ARBA and Open Show – *NOTE – NEW LOCATION* - Grandstands, Downstairs
9:30 a.m.	Cumberland Fair Giant Pumpkin Contest – weighing begins – Heritage Park Museum Area *NEW LOCATION*
10:00 a.m.	Daily Cooking Demonstrations - Exhibition Hall
10:00 a.m.	Daily Demonstrations in the Museum
10:00 a.m.	Poultry and Waterfowl judging – Poultry Barn
10:00 a.m.	Model Train Demonstrations – Entertainment Building
11:00 a.m.	Grand Parade – Theme: "Be a Farmer" – Racetrack; Immediately following end of Parade: Opening Ceremonies – Front of Grandstands Conjuring Carroll – in the Parade
11:00 a.m.	Antique Saw Mill Demonstration – Heritage Park Museum Area
11:00 a.m.	Mid-Way Opens (weather permitting)
11:30 a.m. – 6 p.m.	Conjuring Carroll – strolling entertainment throughout the Fairgrounds
11:30 a.m.	Colby College Woodsman's Team – Blue Seal Feed Show Arena (Heritage Park)
12:00 p.m.	After Dark - Main Stage in front of Exhibition Hall
12:00 p.m.	Antique Hay Press Demonstration – Heritage Park Museum Area
12:15 p.m.	Pig Races - Show Arena
12:30 p.m.	Kids Pedal Tractor Pull – sign up and weigh-in – Antique Power/Hall Implements Building (Heritage Park Museum Area)
12:30 p.m.	Conjuring Carroll – Food Court Area
1:00 p.m.	Kids Pedal Tractor Pull – in front of Antique Power/Hall Implements Building (Heritage Park Museum Area)
1:00 p.m.	Dynamometer Machine Horse Pull – Pulling Arena Sponsored by The Bill Dodge Difference – Proud member of Maine Buick GMC Dealers In memory of Ben Larrabee, the inspiration for bringing the Dyno to Cumberland 3230 lbs. Horse - 27.5-foot 3530 lbs. Horse - 27.5-foot
2:00 p.m.	Harness Racing - Racetrack/Grandstands
2:00 p.m.	Antique Sawmill Demonstration – Heritage Park Museum Area
2:00 p.m.	Conjuring Carroll – Heritage Park Museum Area
2:00 p.m.	Barry Arvin Young – Main Stage in front of Exhibition Hall
2:30 p.m.	Colby College Woodsman's Team – Blue Seal Feed Show Arena – Heritage Park
3:00 p.m.	Antique Hay Press Demonstration – Heritage Park Museum Area
4:00 p.m.	Conjuring Carroll – in front of Old MacDonalds Farm
4:30 p.m.	Moosehedz – Main Stage in front of Exhibition Hall
5:00 p.m.	Conjuring Carroll – in front of Old MacDonalds Farm
6:00 p.m.	Pig Races - Show Arena
6:00 p.m.	2130lbs 6 Foot Steer Pull – Pulling Arena 2530lbs Steer Distance Pull – Pulling Arena
6:30 p.m.	Demolition Derby - In front of Grandstands

Monday September 22

**Maine Agricultural Day | Military Monday | Under the Covers | Preston & Curry | Horse and Steer Memorial Pulls
Teamsters Triple Challenge Event #1 | Wild Horse Band | RaveX Outerlimits Tour – Freestyle Motocross Show
Sweepstakes Ox 6ft Memorial | Ride Bracelet Day - Ride All Rides - One Price \$30.00 (Fair admission separate)**

6:00 a.m. - 9:00 a.m.	Sheep Arrive in Open Pens
7:00 a.m.	Weigh in of all Draft Horses, Oxen and Steers
9:00 a.m. - 9:00 p.m.	Exhibition Hall, Museum, Sugar House, Horticulture, Old MacDonalds Farm, Livestock Barns - Open
8:30 a.m.	4-H Dairy Goat Show – Show Arena
9:00 a.m.	Bill Hawkes Memorial Pull - 2130lbs Steer Distance Pull - Pulling Arena
	2530 Steer 6 ft pull – Pulling Arena
10:00 a.m.	Daily Cooking Demonstrations - Exhibition Hall
10:00 a.m.	Daily Exhibitions – Heritage Park Museum Area
10:00 a.m.	Triple Challenge – Event # 1 Show Steer & Ox – Blue Seal Show Arena – Sponsored by Merrifield Builders
10:00 a.m.	Model Train Demonstrations – Entertainment Building
10:00 a.m. – 1:00 p.m.	Maine Agriculture Day Events – K-6th Grade – see Exhibition Hall book for details
11:00 a.m.	Antique Sawmill Demonstration – Heritage Park Museum Area
12:00 p.m.	Preston & Curry - Main Stage in front of Exhibition Hall
12:00 p.m.	Gillette Mid-Way Opens (weather permitting)
12:00 p.m.	Antique Hay Press Demonstration – Heritage Park Museum Area
1:00 p.m.	4-H Market Hogs weighed
1:00 p.m.	3230 lbs Horse 15ft – Pulling Arena
1:00 p.m.	Harness Racing – Racetrack/Grandstands
2:00 p.m.	Steer and Oxen Demonstrations – Blue Seal Show Arena – Heritage Park
2:00 p.m.	Antique Sawmill Demonstration – Heritage Park Museum Area
3:00 p.m.	Wild Horse Band – Main Stage in front of Exhibition Hall
3:00 p.m.	4-H Sheep Obstacle Course - Show Arena
3:00 p.m.	Antique Hay Press Demonstration – Heritage Park Museum Area
4:00 p.m.	3330 lbs. Ox Distance Pull – Pulling Arena
	2930 lbs. Ox Distance Pull – Pulling Arena
4:00 p.m.	4-H Market Hog Show followed by 4-H Swine Show - Show Arena
5:30 p.m.	4-H Market Lambs Weighed
5:30 p.m.	Under the Covers - Main Stage in front of Exhibition Hall
6:30 p.m.	Pig Races - Show Arena
7:00 p.m.	3130 Horse 2lb % Rock Distance
7:00 p.m.	RaveX Outer Limits Tour – Freestyle Motocross Show – In front of Grandstands

Tuesday September 23

**Senior Citizens Day | Christie Ray Trio | Shugars Ukelele Band | Stone Broke | Carolyn Currie | Teamsters Triple Challenge Event #2
Cumberland Fair Classic Car Show | Maine Antique Tractor Pull**

7:00 a.m.	Weigh in of all Draft Horses, Oxen and Steers
9:00 a.m. - 9:00 p.m.	Exhibition Hall, Museum, Sugar House, Horticulture, Old MacDonalds Farm, Livestock Barns - Open
9:30 a.m.	3330 Ox 6ft Pull – Pulling Arena
10:00 a.m.	Daily Cooking Demonstrations - Exhibition Hall
10:00 a.m.	Daily Demonstrations – Heritage Park Museum Area
10:00 a.m.	4-H Market Lamb Show - Show Arena
10:00 a.m.	Triple Challenge – Event # 2 Show Steer & Ox – Blue Seal Show Arena – Sponsored by Merrifield Builders
10:00 a.m.	Model Train Demonstrations – Entertainment Building
11:00 a.m.	Mid-Way Opens (weather permitting)
11:00 a.m.	Antique Sawmill Demonstration – Heritage Park Museum Area
11:00 a.m.	Carolyn Currie – Main Stage in front of Exhibition Hall
12:00 p.m.	4-H Baby Beef Show - Show Arena
12:00 p.m.	Antique Hay Press Demonstration – Heritage Park Museum Area
12:30 p.m.	3130 lbs. Horse 15 ft. Pull – Pulling Arena
1:00 p.m.	Harness Racing – Racetrack/Grandstands
1:30 p.m.	Shugars Ukelele Band – Main Stage in front of Exhibition Hall
2:00 p.m.	Steers and Oxen Demonstrations – Blue Seal Show Arena – Heritage Park
2:00 p.m.	Antique Sawmill Demonstration – Heritage Park Museum Area
2:00 p.m.	4-H Sheep Show - Show Arena
3:00 p.m.	Antique Hay Press Demonstration – Heritage Park Museum Area
3:30 p.m.	3330 lbs. Horse Distance Pull – Pulling Arena
4:00 p.m.	Open Swine Show, Show Arena
4:00 p.m.	Christie Ray Trio – Main Stage in front of Exhibition Hall
6:00 p.m.	Cumberland Fair Annual Classic Car Show – Racetrack
	(Participants may enter Racetrack at the conclusion of Harness Racing, approximately 4:30pm)
6:00 p.m.	Gordon Robinson Memorial Pull - Sweepstakes Oxen 6 ft Pull – 2930 lbs Oxen 6ft Pull – Pulling Arena
6:00 p.m.	Stone Broke – Main Stage in front of Exhibition Hall
6:30 p.m.	Pig Races - Show Arena
6:30 p.m.	Photography Walk with Mike Leonard – meet at Exhibition Hall
6:30 p.m.	Maine Antique Tractor Pull – in front of Grandstands
7:00 p.m.	4-H All Breed Sheep Lead Line Show - Show Arena

Wednesday September 24

**All American Rodeo! | Mr. Magic | 4-H Livestock Auction | Kent the Juggler | Port City Sound | Henry Honkonen | Houston Bernard Band
Teamsters Triple Challenge Event #3 | Sweepstakes Oxen Memorial Pull | International Ox Pull sponsored by Far Horizon Property Maintenance
Ride Bracelet Day - Ride All Rides - One Price \$30.00 (Fair admission separate)**

7:00 a.m.	Weigh in of all Draft Horses, Oxen and Steers
9:00 a.m.	3600-4130 Oxen Percentage Distance Pull – Pulling Arena
	Ladies Powderpuff Steer & Ox Distance Pull (min 1700 lb.) – Pulling Arena
9:00 a.m.	Open Sheep Show - Show Arena
9:00 a.m. - 9:00 p.m.	Exhibition Hall, Museum, Sugar House, Horticulture, Old MacDonalds Farm, Livestock Barns - Open
10:00 a.m.	Daily Demonstrations - Exhibition Hall
10:00 a.m.	Triple Challenge – Event # 3 Show Steer & Ox – Blue Seal Show Arena – Sponsored by Merrifield Builders
10:00 a.m.	Model Train Demonstrations – Entertainment Building
11:00 a.m.	Robert Morrill Memorial Pull – Sweepstakes Oxen Distance Pull – Pulling Arena
11:00 a.m.	Antique Sawmill Demonstration – Heritage Park Museum Area
12:00 p.m.	Gillette Mid-Way Open (weather permitting)
12:00 p.m.	Antique Hay Press Demonstration – Heritage Park Museum Area
12:00 p.m.	Henry Honkonen – Main Stage in front of Exhibition Hall
1:00 p.m.	Harness Racing – Racetrack/Grandstands
2:00 p.m.	Mr. Magic! – Main Stage in front of Exhibition Hall
2:00 p.m.	Antique Sawmill Demonstration – Heritage Park Museum Area
2:00 p.m.	3330 Horse 15 Foot Pull – Show Arena
2:00 p.m.	Steer and Oxen Demonstrations – Blue Seal Show Arena – Heritage Park
3:00 p.m.	Port City Sound Quartet – Roaming the Grounds
3:00 p.m.	Antique Hay Press Demonstration – Heritage Park Museum Area
3:30p.m. – 6:30 p.m.	Kent The Juggler – strolling entertainment throughout the Fairgrounds
3:30 p.m.	Mr. Magic! – Main Stage in front of Exhibition Hall
4:00 p.m.	Kent the Juggler – in front of Old MacDonald's Barn
4:30 p.m.	4-H Auction: Baby Beef, Market Lambs, Market Hogs - Show Arena
5:00 p.m.	Kent The Juggler – Food Court Area
5:30 p.m.	Houston Bernard Band - Main Stage in front of Exhibition Hall
6:00 p.m.	International Ox Pull – sponsored by Far Horizon Property Maintenance
	Canadian Head Yoke vs. American Neck Yoke 3 ft. Canadian Style Pull
6:00 p.m.	Kent the Juggler – Heritage Park Museum area
6:30 p.m. – 9:00 p.m.	Entries Accepted – State of Maine Old Fashioned 2 Crust Apple Pie Contest – Exhibition Hall
6:30 p.m.	Pig Races - Show Arena
7:00 p.m.	All American Rodeo! – Infield area – NO ADMITTANCE until after Harness Racing has concluded. Entry only through gate near Exhibition Hall/Main Stage

Thursday September 25

**All American Rodeo! | Senior Citizens Day | Andi Fawcett | Plush | Aaron Nadeau | Port City Sound
Poutine Eating Contest – sponsored by Pinky D's Poutine Factory | Mr. Drew and His Animals Too!
Show Steers & Oxen Events | International Horse Pull
Ride Bracelet Day - Ride All Rides - One Price \$30.00 (Fair admission separate)**

6:30 a.m.	Entries accepted/weigh-in for Show Steers and Oxen Show – Blue Seal Feeds Show Arena
7:30 a.m.	Weigh in of all Draft Horses, Oxen and Steers
8:00 a.m.	4-H Beef Heifers and other beef steer arrive
8:30 a.m.	Entries Accepted – State of Maine Old Fashioned 2 Crust Apple Pie Contest – Exhibition Hall (No vehicles on fairgrounds; use Blanchard Rd Parking lot)
9:00 a.m. - 9:00 p.m.	Exhibition Hall, Museum, Sugar House, Horticulture Building, Livestock Barns, Old MacDonalds Farm - Open
9:00 a.m.	Show Steers and Oxen Show – Blue Seal Feeds Show Arena – Heritage Park
9:30 a.m.	4-H Beef Clipping Contest – Show Arena
10:00 a.m.	Daily Cooking Demonstrations - Exhibition Hall
10:00 a.m.	3230 lbs Horse Distance Pull – Pulling Arena
10:00 a.m.	Model Train Demonstrations – Entertainment Building
10:30 a.m.	Deadline for Accepting Apple Pie Entries *no entries accepted after 10:30 a.m.*
11:00 a.m.	State of Maine Old Fashioned 2-Crust Apple Pie Contest Judging - Exhibition Hall
11:00 a.m.	Antique Sawmill Demonstration – Heritage Park Museum Area
11:00 a.m.	Aaron Nadeau – Main Stage in front of Exhibition Hall
12:00 p.m.	Gillette Mid-Way open (weather permitting)
12:00 p.m.	Antique Hay Press Demonstration – Heritage Park Museum Area
12:30 p.m.	4-H Beef Heifer Show and other Beef Steer Show
1:00 p.m.	Show Steer and Oxen Log Scooting Contest – Blue Seal Feeds Show Arena – Class 1 Youth Scooting – sponsored by Enhanced Beauty by Molly Class 2 Youth Log Scooting Class 1 Log Scooting Class 2 Log Scooting - 1st Prize Sponsored by One Stop Earthworks Class 3 Log Scooting
1:00 p.m.	Loring and Ruth Norton Memorial Pull - 3430lbs Horse Distance Pull - Pulling Arena
1:00 p.m.	Harness Racing – Racetrack/Grandstands
1:30 p.m.	Andi Fawcett – Main Stage in front of Exhibition Hall
2:00 p.m.	Antique Sawmill Demonstration – Heritage Park Museum Area
2:30 p.m.	*NEW* Women's Powderpuff Team of Horses Distance Exhibition 3 min – Pulling Arena

3:00 p.m. – 7:00 p.m.	Kids 16 and under Single Horse Distance Exhibition 3 min – Pulling Arena
3:00 p.m.	Port City Sound –Roaming throughout Fairgrounds
4:00 p.m.	Antique Hay Press Demonstration – Heritage Park Museum Area
4:00 p.m.	Plush – Main Stage in front of Exhibition Hall
4:00 p.m.	Mr. Drew and His Animals Too! – Show Arena
6:00 p.m.	Poutine Eating Contest – sponsored by Pinky D's Poutine Factory – Main Stage in front of Exhibition Hall – submit entries at the Main Office by 3pm or at stage before 5:30; drawing on stage between 5:30 and 6pm for 5 participants – Cash prizes!
6:00 p.m.	International Horse Pull – Canadian & American Team Competition
6:30 p.m.	Two horse percentage pull Canadian Style 3 Foot; Highest load percentage crossed wins
7:00 p.m.	Pig Races - Show Arena
	All American Rodeo! – Infield area – NO ADMITTANCE until after Harness Racing has concluded.
	Entry only through gate by Main Stage

Friday September 26

**Cumberland Fair Maine Maple Day | MSTTP Tractor Pull featuring Modified Big-Rig's and Semi Pulls | Ryan Halliburton
Joe Howard Variety Artist | Jack Fossett Band | Nettie Loops - Hula Hoop Experience | The World Famous Grassholes
Henry Lowery | Sweepstakes Horse Memorial Pulls | Draft Horse & Pony Show**

7:00 a.m. – 9:00 a.m.	Entries accepted for Draft Horse and Pony Show – Outside Riding Arena
7:30 a.m.	Weigh in of all Draft Horses
9:00 a.m. – 9:00 p.m.	Exhibition Hall, Horticulture, Sugar House, Museum, Livestock Barns, Old MacDonalds - Open
9:00 a.m. – 11:00 a.m.	Silver Dollar Pancakes with Maine Maple Syrup - Sugar House
10:00 a.m.	Daily Cooking Demonstrations - Exhibition Hall
10:00 a.m.	Daily Demonstrations – Heritage Park Museum Area
10:00 a.m.	Draft Horse and Pony Show – Outside Riding Arena
	Pony Pair Wagon class Sponsored by Richard Wing & Son Logging Inc.
	Horse Pair Wagon class Sponsored by Blue Seal and Kent Feeds
10:00 a.m.	Model Train Demonstrations – Entertainment Building
10:00 – Noon	Maine Maple Syrup Tasting – Sugar House
10:30 a.m.	Kilton Lamb Memorial Pull – Sweepstakes Horse Distance – Pulling Arena
11:00 a.m.	Gillette Mid-Way Open (weather permitting)
11:00 a.m.	Antique Sawmill Demonstration – Heritage Park Museum Area
11:30 a.m.	Ryan Halliburton – Main Stage in front of Exhibition Hall
12:00 p.m.	Harness Racing – Racetrack/Grandstands
12:00 p.m.	Antique Hay Press Demonstration – Heritage Park Museum Area
1:30 p.m.	Jack Fossett Band – Main Stage in front of Exhibition Hall
2:00 p.m.	Gordon Robinson Memorial Horse Pull - 3430 - 12 ft Pull - Pulling Arena
2:00 p.m.	Antique Sawmill Demonstration – Heritage Park Museum Area
2:00 p.m.	Maine Maple Candy Demonstration - Sugar House
3:00 p.m.	Antique Hay Press Demonstration – Heritage Park Museum Area
3:00-5:00 p.m.	4-H Working Steers arrive
3:00-6:00 p.m.	4-H Dairy arrive
3:00 p.m.	Maine Maple Coated Nuts Demonstration - Sugar House
3:30 p.m.	Henry Lowrey – Main Stage in front of Exhibition Hall
3:30 p.m.	Nettie Loops Hula Hoop Experience – Show Arena
3:30 p.m. – 7:30 p.m.	Joe Howard Variety Artist – strolling throughout Fairgrounds
3:00 p.m. – 5:00 p.m.	4-H Working Steers arrive – Pulling Area
3:00 p.m. – 6:00 p.m.	4-H Dairy Arrive – Livestock area
4:00 p.m.	Maine Maple Sugar on Snow Demonstration - Sugar House
4:00 p.m.	Harnessed Mini-Horse Team Kids Exhibition Event Pulling Arena
5:00 p.m.	Joe Howard Variety Artist – Food Court Area
5:00 p.m. – 8:00 p.m.	Sample Maine Maple Treats – Sugar House
5:30 p.m.	The World Famous Grassholes – Main Stage in front of Exhibition Hall
6:00 p.m.	Hall Family Memorial Pull Sweepstakes Horse 12 ft - Pulling Arena
6:00 p.m.	Joe Howard Variety Artist – in front of Old MacDonald's Barn
6:30 p.m.	Pig Races - Show Arena
6:30 p.m.	MSTTP Tractor Pulls – in Front of Grandstands
7:00 p.m.	4-H Dairy Clipping Contest - Show Arena

Saturday September 27

**Pig Scramble | Silver Circus | 43 Degrees North | Quilts of Valor | Magic Wes Wonder | Chase Jobe | Timothy James & Band | Buck T Edwards
MSTTP Truck Pulls | 3 Horse Pull | Fireworks Show by Central Maine Pyrotechnics**

7:00-8:30 a.m.	Entries accepted for Farmer's Draft events
7:30 a.m.	Draft Horse, Steer and Oxen weigh-in
9:00 a.m.	Exhibition, Horticulture, Sugar House and Museum Open
9:00 a.m.	Youth Poultry Show – Livestock Show Ring – sponsored by Blue Seal Feeds
9:00 a.m.	Pig Scramble (entry completed in Main office by 7 p.m. Thursday)
9:00 a.m.	Farmer's Draft Horse, Mule and Pony Events – Blue Seal Feeds Show Arena
	Farmer's Single Draft Horse Log Twitch – Blue Seal Feeds Show Arena
	Bruce Alexander Memorial - Farmer's Team Draft Horse Team Log Scoot –
	Blue Seal Feeds Show Arena – 1st Prize Sponsored by One Stop Earthworks
9:30 a.m.	Calf Scramble – Pulling Arena (Drawing prior to event)
10:00 a.m. – 1:00 pm	The Silver Circus – strolling entertainment roaming throughout the Fairgrounds
10:00 a.m.	Gillette Mid-Way Open
10:00 a.m.	43 Degrees North – Main Stage in front of the Exhibition Hall

10:00 a.m.	Daily Cooking Demonstrations - Exhibition Hall
10:00 a.m.	Model Train Demonstrations – Entertainment Building
10:00 a.m.	1131-1330 Kids Steer 6ft Pull 16 and under – Sponsored by Fielding’s Oil & Propane
11:00 a.m.	Antique Sawmill Demonstration – Heritage Park Museum Area
11:00 a.m.– 4:00 p.m.	Cornhole Tournament – entry fee \$40/team – Heritage Park near Blue Seal Arena
11:30 a.m.	Farmer’s Draft Horse, Mini and Pony Demonstrations - Blue Seal Show Arena
	Youth (17 & Under) Draft Horse and Pony and Mini Horse Single Log Twitch Demonstration
	Youth (17 & Under) Draft Horse and Pony and Mini Horse Team Log Twitch Demonstration
	NEW 3-Horse Hitch Distance Pull – Pulling Arena
11:30 p.m.	Quilts of Valor Presentation – Main Stage in front of Exhibition Hall
12:00 p.m.	Harness Racing – Racetrack/Grandstands
12:00 p.m.	Money Scramble - 12-year-old and under – no parents allowed in the ring - Show Arena
12:00 p.m.	Antique Hay Press Demonstration – Heritage Park Museum Area
12:30 p.m.	Pig Races - Show Arena
12:30 p.m.	Farmer’s Steer and Ox Distance % Pull – Pulling Arena
12:30 p.m.	Julia Gagnon – Main Stage by the Exhibition Hall
1:00 p.m.	4-H Dairy Show - Show Arena
1:00 p.m.	Farmers Draft Horse, Mule and Pony – Mystery Event – Blue Seal Show Arena
1:30 p.m.	Chase Jobe – Main Stage in front of Exhibition Hall
2:00 p.m.	Antique Sawmill Demonstration – Heritage Park Museum Area
2:30 p.m.	4-H Working Steers Show and Pulling - Pulling Arena
2:30 p.m. – 5:30 p.m.	Magic Wes Wonder – strolling throughout Fairgrounds
3:00 p.m.	Magic Wes Wonder – in front of Old Mac Donald’s Barn
3:00 p.m.	Antique Hay Press Demonstration – Heritage Park Museum Area
3:30 p.m.	Timothy James (and band) – Main Stage in front of Exhibition Hall
5:00 p.m.	Large livestock - Sheep, Dairy, Beef, Swine - begin departure – Livestock Area will be closed to public
6:00 p.m.	Buck T Edwards – Main Stage in front of Exhibition Hall
6:30 p.m.	MSTTP Truck Pull – Front of Grandstand
8:30 p.m. (approx.)	Central Maine Pyrotechnics – FIREWORKS! - in front of Grandstands

Sunday, September 28

Free Admission | Harness Racing Only - Post Time 11:00 AM

9:00am – 11:00am-	4-H exhibits removed from 4-H Exhibition Hall
9:00 am – noon –	Items removed from Exhibition Hall
10am – 12 noon –	Giant Pumpkin & Squash removal *Fair assistance will only be available during this time*

ADMISSION POLICY

Adults \$15 - Children 12 and under Free. Tuesday and Thursday ONLY - Senior Citizens (65+) \$6

WEEKLY ADMISSION PASS - \$75. PARKING - FREE.

No pets are allowed except for service animals. Per State of Maine Law: A “service animal” is a DOG that has been trained to do work or perform tasks for the benefit of a person with a disability. Other species of animals are NOT considered service animals in context of Public Accommodations (PA’s). A service animal is an aid that helps a person with a disability access services. Service Animals are **not pets**.

Please note that livestock will begin departure by Saturday evening from the fairgrounds. The Cumberland Farmers Club hopes that you understand that the animals and their keepers do everything possible to minimize any upset they may encounter during their stay on the grounds.

All Government Schools (K thru 6) and buses are to use specified parking and Gate 8 access only.

School Children Chaperones: School children chaperones accompanying school children on a school bus will be admitted free at Gate 8 ONLY. Students over 12 years of age will be charged regular daily admission. See the Special Group Rate section below for advance planning. Chaperones arriving in private vehicles will be directed to standard gates and charged regular daily admission.

Home Schools: Kindergarten through 6th grade children will be admitted free on Maine Agricultural day at Gate 8, regular admission will apply at other times and dates. Chaperones will be charged regular daily admission.

Day Care Chaperones: Day care children will be admitted free on Maine Agricultural day at Gate 8, regular admission will apply at other times and dates. Chaperones will be charged regular daily admission.

Disabled Individuals: Non ambulatory (wheel chaired) individuals will be admitted free, due to lack of access to all areas of the Fairgrounds. Chaperones and Companions will be charged regular daily admission. No other disability discounts will apply.

Military: Military Monday ONLY - Military with proper ID - \$6.00 admission - Requires Department of Defense ID for Active Duty, Current Reservists, Retired Personnel, VA Health Benefits Card, State Driver’s License showing Veteran Designation or DD214 (no dependent IDs considered)

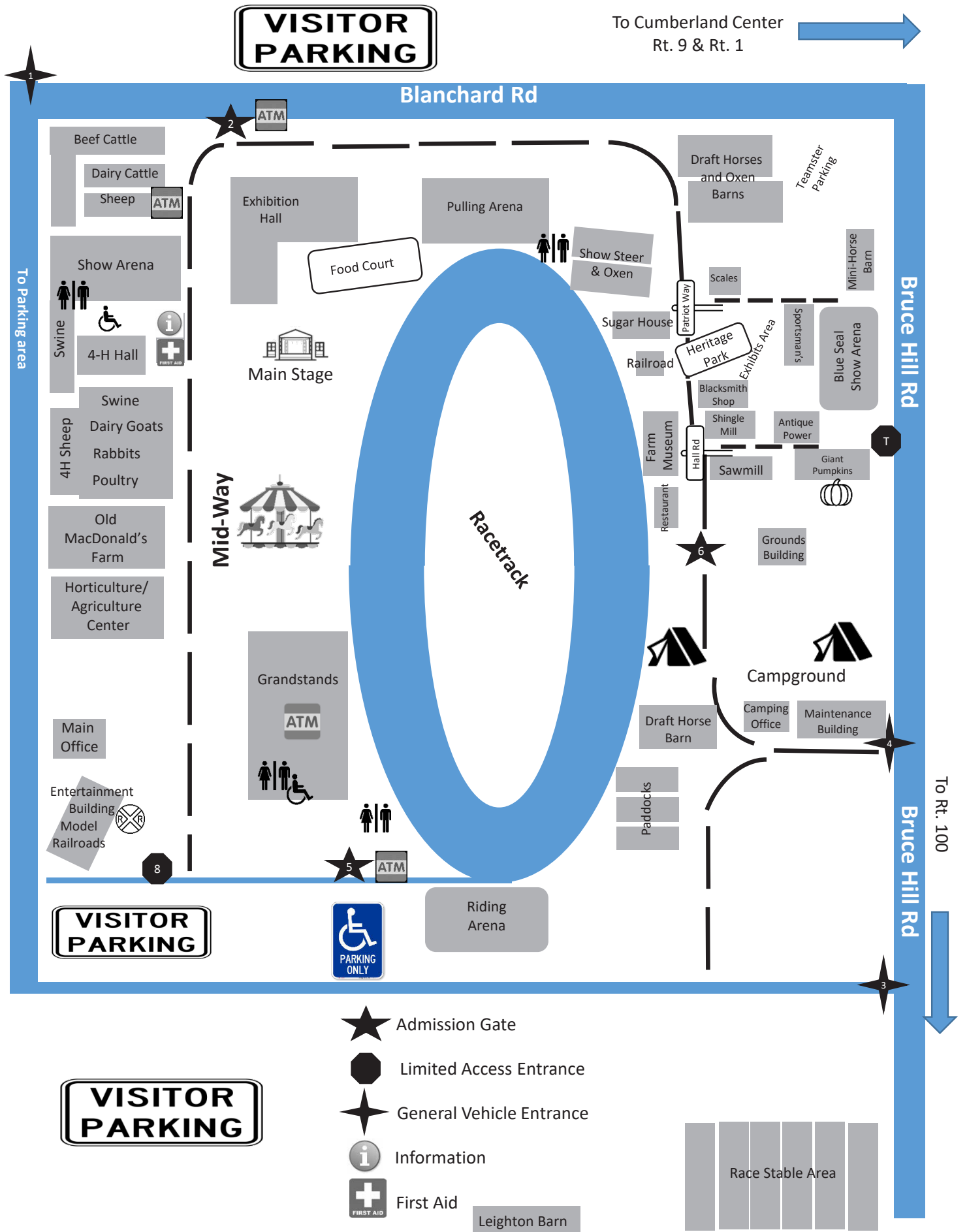
Special Group Rates: Large group rates **must be pre-approved** and requests for special rates must be made at least one week prior to the Fair Opening. Requests may be presented to the Secretary for consideration: cfcsecretary@maine.rr.com.

By entering the 2025 Cumberland County Fair, Participants acknowledge that the Fair brings some risk and do hereby assume responsibility for their own well-being as well as that of any person whom they are guardian of/responsible for. Further, entry is implied consent that you agree to comply with all State, Federal, Local or Organization mandated guidelines for COVID-19 Safety and/or other mandates which may be in place at the time of the event, including wearing of face coverings and social distancing. Participants understand, agree, and hereby consent that failure or disregard to follow all protocols in effect is sufficient grounds to be excluded from participation in the Fair by Cumberland Farmers Club (CFC) or any Fair personnel or authority, and by entering provide implied consent in advance to leave and exit the event, without protest or refund, upon request by CFC or any Fair personnel or authority. Entrance provides implied consent to accept all potential risks, including personal injury or other harm, and agree to hold harmless and release Cumberland Farmer’s Club (CFC) or any other sponsoring organization(s) and all their subsidiaries, affiliates, officers, directors, licensees, representatives, and successors (“Released Parties”) from any and all losses, causes of action, liabilities, expenses and claims for damages.

Fairgrounds Camping: All trailers must have holding tanks • Dumping station available on the grounds. • All sites have power/water.

Fair Week Camping Rates: Employee, Livestock, and 4-H Exhibitor Rates: \$55/week | Vendors \$80 Week | Non-Exhibitors: \$220/week (includes 2 week passes) | **Daily Rate: \$35 Summer Rates: \$50** per day for campers; **\$25** per day for tents; **\$450** monthly rate. **Dumping station: \$35** Note: pump-out on site may be available during Fair, see Camping Office. Negotiable weekly rates are available for longer term summer (non-fair) camping. Contact Tom Matthews Superintendent of Camping at 207-756-9738 for further details. Checks made payable to Cumberland Farmer’s Club. Register at the Camping Office on arrival. **Reservations:** You may fill out and submit the form online at www.cumberlandfair.com. However, if you wish, you may print/mail the form at the back of the book to the Camping Superintendent at the following address: Tom Matthews 25 Lookout Ln Windham ME 04062

Camping Rules continued on page 10.





PHOTOGRAPHY

The right tool for the right job

2025 Ram Commercial Trucks & Vans,
now available with fleet pricing at Lee



New for 2025:
High-Output 3.0L Hurricane



More Available Horsepower
Than Ford Raptor or Any
Chevrolet Silverado 1500!

CUMBERLAND FAIR EXCLUSIVE!

\$1000

**IN YOUR CHOICE OF
ACCESSORIES WHEN YOU
BUY A NEW RAM AT
LEE IN WESTBROOK**

EXPIRES 12/31/25. PRESENT THIS AD TO REDEEM.



Lee Dodge Chrysler Jeep Ram
200 Main Street, Westbrook
207-856-6685 • leedodgechryslerjeep.com



HALL

IMPLEMENT CO.

**Farm, Lawn & Grounds
Care Equipment**



JOHN DEERE

**1 John Deere Road
(at 202 & 302 Rotary)
Windham, ME 04062
207-892-6894**

Monday - Friday 7:30 am - 5 pm

Saturday 7:30 am - 12 pm

www.hallimplementco.com

**“Family Owned & Operated”
Since 1961**